



We Secure the Internet.



FireWall-1

PRODUCT FEATURES:

- Access control based on Stateful Inspection
- Centralized, policy-based management
- Extensible with range of Check Point and OPSEC products
- Market-leading performance through SecureXL
- Broad range of turnkey appliance and open server platforms

PRODUCT BENEFITS:

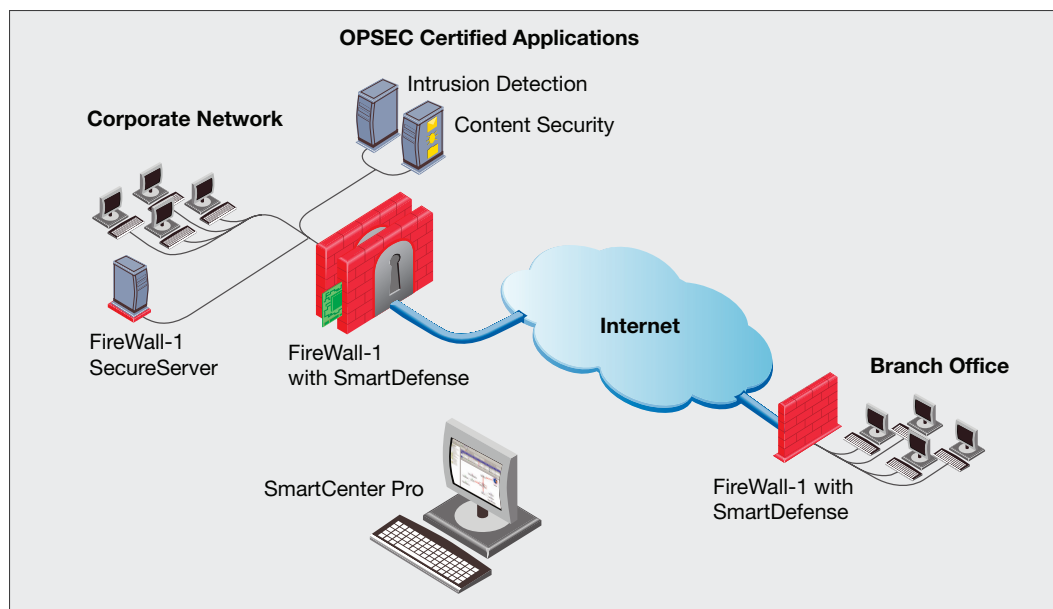
- Delivers maximum security protection for your business
- Simplifies deployment and management of enterprise-wide security
- Forms flexible security infrastructure with best-of-breed solutions
- Enables multi-gigabit firewall performance
- Provides unparalleled platform options for networks of all sizes

YOUR CHALLENGE

Internet technology has led many companies to redefine the way they communicate with customers, work with partners and sell products. As your company embraces the Internet to forge new business models, Internet security becomes increasingly important. To maintain the trust of partners and customers, you must ensure that critical data, applications, servers and networks are not just accessible, but secure.

OUR SOLUTION

Check Point FireWall-1®, the industry's leading Internet security solution, provides the highest level of security, with access control, content security, authentication, and integrated Network Address Translation (NAT). Only FireWall-1 delivers true Stateful Inspection across the broadest set of applications in the industry, including Voice over IP (VoIP) and multimedia applications. FireWall-1 is also the first enterprise firewall to support XML/SOAP and Microsoft Common Internet File System (CIFS). In addition, Open Platform for Security (OPSEC™) certified products provide an unparalleled breadth of options for extending protection with products such as intrusion detection and content security.

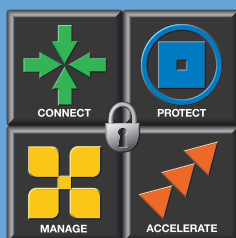


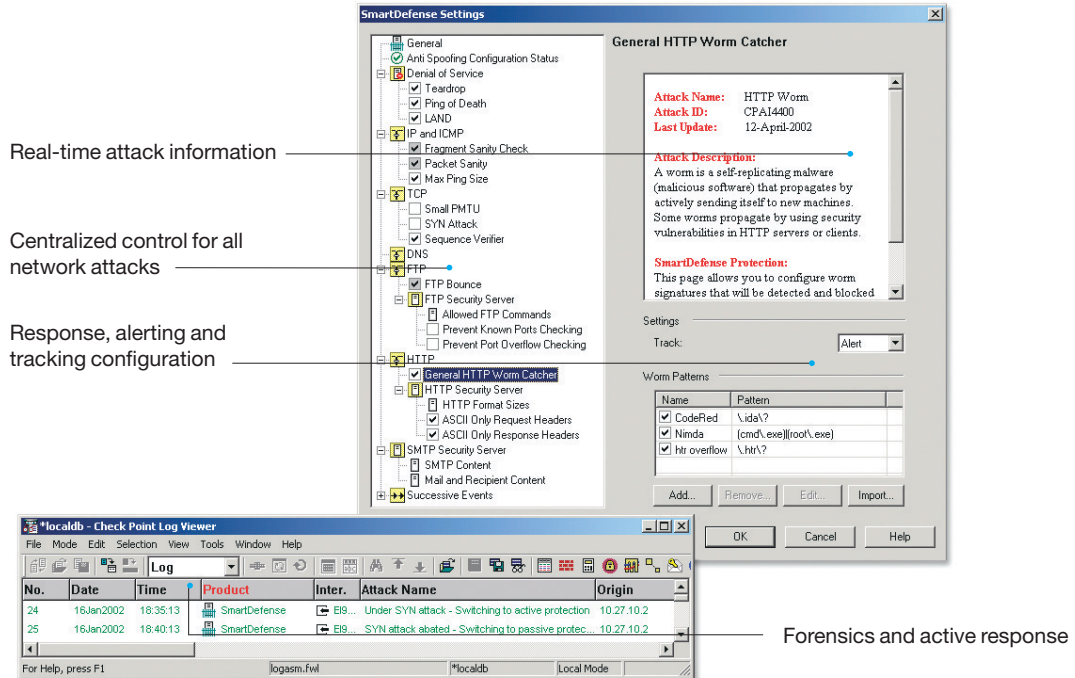
FireWall-1 and FireWall-1 SecureServer provide true enterprise protection that is extensible with OPSEC certified applications.

UNPARALLELED PROTECTION

FireWall-1 secures 93% of the global Fortune 100 and over 91% of global Fortune 500 financial institutions. Only Check Point, which

invented Stateful Inspection, provides true Stateful Inspection that can track the state and context of all communications, for truly complete network protection.





SmartDefense actively protects organizations from all known, and most unknown network attacks using intelligent security technology.

Broad Application Support

With support for over 150 pre-defined applications and protocols out-of-the-box, FireWall-1 provides the broadest application support in the industry.

Examples:

- Microsoft CIFS
- SOAP/XML
- Instant Messaging and Peer-to-Peer Applications
- Windows Media, RealVideo and Session Initiation Protocol (SIP)
- H.323-based services, including Voice over IP (VoIP) and NetMeeting
- SMTP, FTP, HTTP and telnet traffic
- Oracle SQL and ERP

FireWall-1 continues to lead the industry by evolving to support new business needs. As the first firewall to support Microsoft CIFS, FireWall-1 provides granular access control to file and print servers, enabling you to secure them from unauthorized usage. With FireWall-1, you can restrict who can browse or publish documents to a specific server. The first enterprise firewall to inspect SOAP/XML and capable of terminating SSL connections, FireWall-1 eliminates the requirement to deploy a separate infrastructure to secure Web Services.

Continuous innovation means FireWall-1 delivers the highest level of security to your organization. FireWall-1, inspects Web applications such as Instant Messaging

and peer-to-peer applications even when they are running on commonly used ports. Truly the basis for a security infrastructure, you can extend Web application and CIFS security to include single sign-on with an optional UserAuthority Module.

Protection Against Known and New Threats

In today's environment, centralized protection from known and new Internet threats is increasingly important. FireWall-1 includes SmartDefense™ technology to protect your company against all types of network attacks — including simple packet corruption as well as damaging higher-level attacks. For example, SmartDefense automatically blocks and logs oversized packets, SYN floods and fragmentation attacks. SmartDefense also mitigates risk from denial of service (DoS) and distributed denial of service (DDoS) attacks by managing network capacity and reserving firewall capacity for mission-critical TCP connections like email and web traffic.

For further protection against new threats and potential variants, an optional SmartDefense service provides real-time attack information and protection updates through the online Check Point SmartDefense attack center.

Granular Content Security

FireWall-1 Application Intelligence enables you to control access to specific HTTP, SMTP or FTP resources based on source, destination, user privilege and time of day. FireWall-1 SmartDefense technology provides application-level inspection to protect data and application servers from malicious Java and ActiveX applets. You can add anti-virus screening, URL filtering and Java security from a broad selection of OPSEC Certified products.

Flexible Authentication

Before granting access to sensitive network resources, organizations must validate user identity. With FireWall-1, numerous authentication solutions can be integrated into a security policy, including FireWall-1 and LDAP-stored passwords, token-based products, RADIUS, TACACS+ and X.509 digital certificates.

Integrated Network Address Translation

FireWall-1 provides NAT to conceal internal network addresses. Integrated with Stateful Inspection technology, FireWall-1 automatically generates static and dynamic NAT rules based on network topology information.

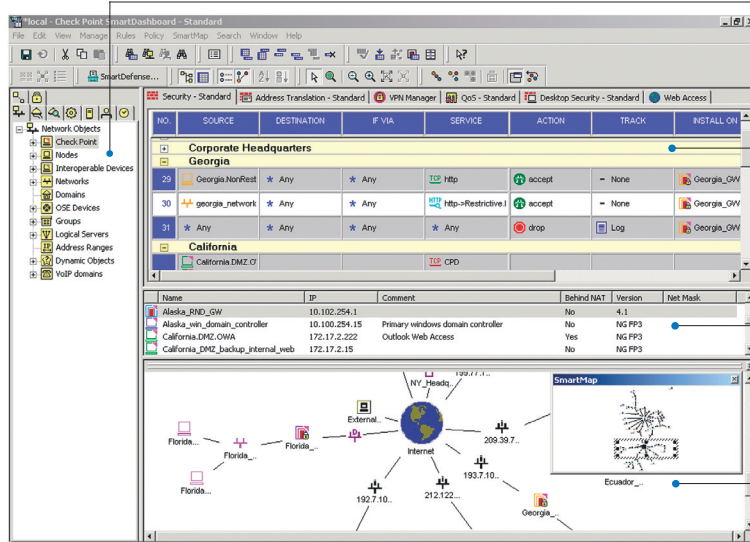
SMART MANAGEMENT

Check Point Security Management Architecture (SMART™) solutions enable you to centrally manage and deploy a single firewall policy to an unlimited number of FireWall-1 gateways. Once a policy is created or modified, it is automatically distributed to all locations.

FireWall-1 as well as other Check Point and select OPSEC products. SmartView Tracker provides real-time graphical tracking, monitoring and accounting information for all connections logged by FireWall-1 gateways. It also logs administrator actions for quick troubleshooting of configuration errors. In addition, administrators can use SmartView Tracker to search or filter logs to quickly locate or track events.

WIRE-SPEED SECURITY

FireWall-1 delivers market-leading price/performance to offices of all sizes with patent-pending SecureXL™ technology. SecureXL-enabled solutions are available in a variety of form factors to meet your deployment needs, including SecureXL-enabled appliances, optional firewall and VPN acceleration cards and an optional Performance Pack software module. In addition, for environments where congestion on the Internet link is a possibility, an optional FloodGate-1® module provides flexible quality of service management. FloodGate-1, which can run on the



Objects tree contains all objects — for users, hosts, networks and more

Rule base manages Firewall, NAT, QoS, Desktop Security and Web Access policies

Objects list provides easy access to the most commonly used objects

Optional SmartMap module provides a detailed, graphical map of the security deployment

SmartDashboard simplifies security by making all necessary information readily accessible.

SMART User Interface

SmartDashboard™, included with centralized SMART management solutions, simplifies management by providing a single user interface for creating and deploying policies for multiple Check Point products. This enables you to manage FireWall-1 and NAT policies as part of an overall security policy that includes VPNs, client security and QoS management. All object definitions, including those for users, hosts, networks and services, are shared among all applications for efficient policy creation and security management.

SMART Status & Auditing

SmartView Status™ and SmartView Tracker™ are included with centralized SMART management solutions. SmartView Status enables monitoring system status of

FireWall-1 gateway, ensures optimal performance for business-critical traffic, such as VPN, database and Web services traffic. FloodGate-1 also provides low latency queuing for additional control of VoIP and multimedia traffic.

NON-STOP SECURITY

For those seeking advanced high availability and load sharing, Check Point offers ClusterXL™, an optional module. ClusterXL distributes traffic of all types across clustered gateways. If a gateway becomes unreachable, all new and ongoing connections are seamlessly redirected to remaining cluster members. Residing on the gateways themselves, ClusterXL requires no additional hardware investment and is easily configured through SmartDashboard.

SECUREVPN

FireWall-1 is included with Check Point's industry-leading Virtual Private Network solution, VPN-1® Pro™. With Check Point VPN-1/FireWall-1, security rules are applied to VPN traffic to guarantee complete integrity of network security. FireWall-1 installations can easily be upgraded to VPN-1.

SECURECHOICE

Corporations can deploy FireWall-1 on Internet and internal network gateways, or deploy FireWall-1 SecureServer™ on a single host to protect a critical application server. FireWall-1 is supported on a broad range of deployment platforms — meeting the price/performance requirements of any size organization:

- Turnkey “Secured by Check Point” appliances with pre-installed Check Point software
- Windows, Solaris and Linux servers
- SecurePlatform™, included on the standard Check Point product CD, installs FireWall-1 and hardened operating system on open servers in under 10 minutes

To find a platform tailored to your Internet security needs, please visit the Check Point Platform Selection Guide at: <http://www.checkpoint.com/products/protect/platforms.html>.

SYSTEM REQUIREMENTS

ENFORCEMENT MODULE

| | |
|--------------------------|--|
| OPERATING SYSTEMS | Windows 2000 Server (SP1,SP2, SP3) Windows 2000 Advanced Server (SP1, SP2) Windows NT 4.0 (SP6a) Sun Solaris 8 (32 or 64 bit mode) Sun Solaris 9 (64 bit mode) Red Hat Linux 7.0, 7.2, 7.3 Nokia IPSO 3.5, 3.51, 3.6 Check Point SecurePlatform |
|--------------------------|--|

DISK SPACE 40 MB

MEMORY 128 MB

ADDITIONAL CAPABILITIES

FireWall-1 supports a number of other Check Point management modules, including the following:

SmartCenter™/SmartCenter Pro™ delivers centralized management for all Check Point security, VPN and QoS offerings.

Provider-1®/SiteManager-1™ delivers centralized management for all Check Point security, VPN and QoS offerings, as well as consolidates multiple security policies in an architecture that scales to support thousands of policies.

SmartMap™ allows security managers to validate the integrity of their security policy prior to deployment by providing a detailed, graphical map of an organization's security deployment.

SmartUpdate™ delivers centralized software and license management for Check Point products to ensure that a consistent security policy is enforced throughout the enterprise network.

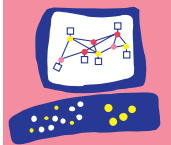
SmartView Monitor™ enables powerful performance analysis by presenting graphical views of end-to-end performance metrics such as bandwidth, round trip time, and packet loss.

SmartView Reporter™ is a complete reporting system that delivers in-depth network security activity and event information from Check Point log data.

UserAuthority™ provides a secure communications layer for single sign on to eBusiness applications.

Account Management Module enables VPN-1/FireWall-1 gateways to integrate with one or more LDAP-compliant directory servers.

Check Point
SOFTWARE TECHNOLOGIES LTD.



We Secure the Internet.

© 2003 Check Point Software Technologies Ltd. All rights reserved.

Check Point, the Check Point logo, ClusterXL, ConnectControl, FireWall-1, FireWall-1 GX, FireWall-1 SecureServer, FireWall-1 SmallOffice, FireWall-1 VSX, FireWall-1 XL, FloodGate-1, INSPECT, INSPECT XL, IQ Engine, Open Security Extension, OPSEC, Provider-1, SecureKnowledge, SecurePlatform, SecureXL, SiteManager-1, SmartCenter, SmartCenter Pro, SmartDashboard, SmartDefense, SmartLSM, SmartMap, SmartUpdate, SmartView, SmartView Monitor, SmartView Reporter, SmartView Status, SmartView Tracker, SVN, UAM, User-to-Address Mapping, UserAuthority, VPN-1, VPN-1 Accelerator Card, VPN-1 Net, VPN-1 Pro, VPN-1 SecureClient, VPN-1 SecuRemote, VPN-1 SecureServer, VPN-1 SmallOffice, and VPN-1 VSX are trademarks or registered trademarks of Check Point Software Technologies Ltd. or its affiliates. All other product names mentioned herein are trademarks or registered trademarks of their respective owners. The products described in this document are protected by U.S. Patent No. 5,606,668 and 5,835,726 and may be protected by other U.S. Patents, foreign patents, or pending applications.

P/N 500551